



SATIN LOTION 6836

Formula

A	• Cyclopentasiloxane & dimethicone copolyol	20.00 %
	• Cyclomethicone	10.00 %
	• MICROPEARL MHB (<i>Crosslinked polymethylmethacrylate - SEPPIC</i>)	10.00 %
	• SEPICIDE HB (<i>Phenoxyethanol / Methylparaben / Ethylparaben / Propylparaben / Butylparaben - SEPPIC</i>)	0.30 %
	• Fragrance	0.05 %
B	• Water	QS 100%
	• SEPICIDE CI (<i>Imidazolidinyl urea - SEPPIC</i>)	0.20 %
	• Glycerin	5.00 %
	• Sodium chloride	2.00 %

Procedure

Introduce the silicon oils into the main tank. Disperse MICROPEARL while gently mixing then add preservatives and fragrance. Separately prepare the aqueous phase B and add it progressively into A with continuous stir. When all ingredients are blended, start the homogenizer for 15' at 3000rpm (TRIMIX / 6kg).

Comments

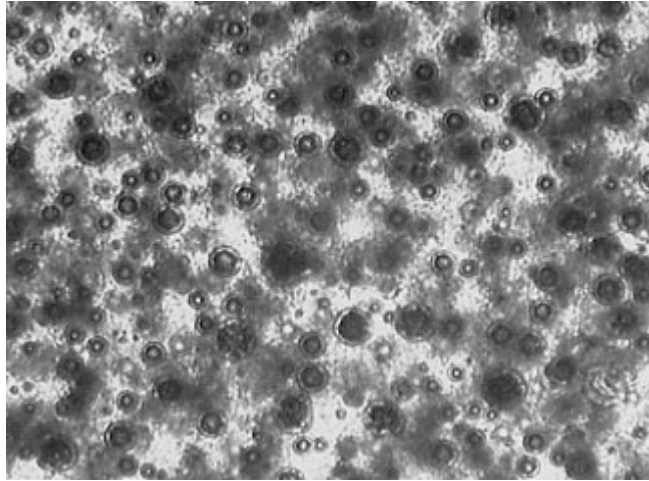
MICROPEARL MHB Ultra-soft hollow microspheres dispersible into lipophilic medium. As MICROPEARL suppresses oily feel, it is useful in W/O and W/Silicon emulsions and imparts them a high powdery sensation. MICROPEARL M310 absorbs the oily components, giving at 2% a stabilizing effect without any increase in viscosity. Higher level such as 1part MICROPEARL MHB for 3 parts of oily phase can be introduced into the emulsion and remains perfectly dispersed through time.

Characteristics

Appearance	White shiny lotion
Viscosity	27,000 mPa.s BROOKFIELD LV4 6rpm (viscosity of the blank without SEPIFEEL manufactured with the same process = 25,000)
Stability	stable at room temperature/40°C/50°C Stable after freeze-thaw cycles -5/+40°C Stable when centrifuged at 50°C 20' 3000rpm



Whiteness (57CO044) : 92
Microscopic examination : after 3 months



Notes

Cyclopentasiloxane & dimethicone copolyol : DC5225C (DOW CORNING)
Cyclomethicone : DC345 (DOW CORNING)
Fragrance : POUCE G92.30802 (ROBERTET)

6836 – SEPPIC – A0201

Since this formula has not been the object of a toxicological study, the use and handling of the products proposed is purely indicative and SEPPIC accepts no responsibility for their use by another party.