



MULTIPLE CREAM GEL ONE STEP PROCESS 7067

Thanks to its own properties and in combination with a specific process, SEPIPLUS™ 400 allows to formulate multiple cream gel which will deliver improved and long lasting efficacy for your actives

Formula

A	<ul style="list-style-type: none">• SEPIPLUS™ 400 (Polyacrylate-13 & polyisobutene & polysorbate 20 - SEPPIC)• C12-15 alkyl benzoate• SEPICIDE™ LD (Phenoxyethanol - SEPPIC)	1.80 % 20.00 % 1.00 %
B	<ul style="list-style-type: none">• Water	Up to 100 %

Procedure (lab 200g)

Blend ingredients in A in the beaker then progressively add water while gently mixing with a spatula or an anchor.

Comments

SEPIPLUS™ 400 A New generation of « Hydro Swelling Droplet » polymers, for improved performance. SEPIPLUS™ is designed to give an improved electrolyte resistance profile. Compatible with a wide range of actives over a wide pH range (pH 3 to 11). A thickening and emulsifying agent in a liquid form, ready to use (no predispersion or neutralization).

Characteristics

Appearance	white fluid emulsion
Viscosity at room temp	85,000 mPa.s BROOKFIELD LV2 6rpm
Stability	> M3 at room temp & 45°C

SEPPIC SA
33(0) 1 40 62 55 55

Givaudan Lavitrotte SA
33(0) 4 78 61 55 00

SEPPIC Inc
1 973 882 5597

SEPPIC China
86(21) 64 66 01 49

SEPPIC UK Ltd
44 208 577 8800

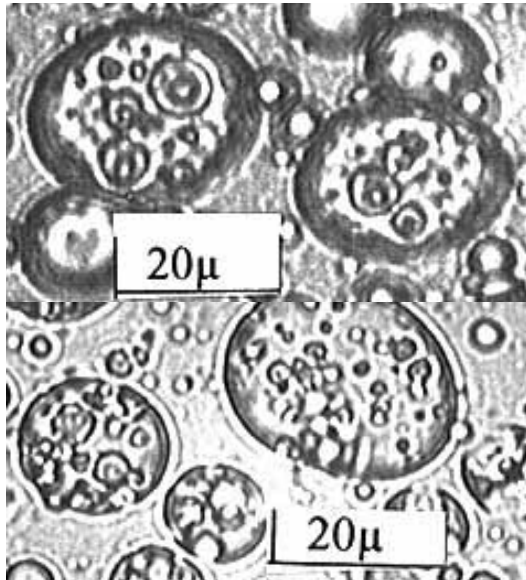
SEPPIC GmbH
49(0) 220 3890 3100

SEPPIC Italia Srl
39 02 38009110

SEPPIC Belgium NV
32 3 250 3911



Assessment



Rheological studies with frequency or temperature sweep have demonstrated the perfect stability of this multiple emulsion.

Isohexadecane also gives good results in this emulsion.

The multiple type of the cream gel improves efficacy and long term effects of your actives (see publication at IFSCC OSAKA by A. ROSO october 2006)

7067 – SEPPIC – 0702

Since this formula has not been the object of a toxicological study, the use and handling of the products proposed is purely indicative and SEPPIC accepts no responsibility for their use by another party.

SEPPIC SA
33(0) 1 40 62 55 55

Givaudan Lavirotte SA
33(0) 4 78 61 55 00

SEPPIC Inc
1 973 882 5597

SEPPIC China
86(21) 64 66 01 49

SEPPIC UK Ltd
44 208 577 8800

SEPPIC GmbH
49(0) 220 3890 3100

SEPPIC Italia Srl
39 02 38009110

SEPPIC Belgium NV
32 3 250 3911