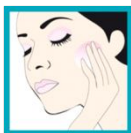



**Multiple  
Texture**


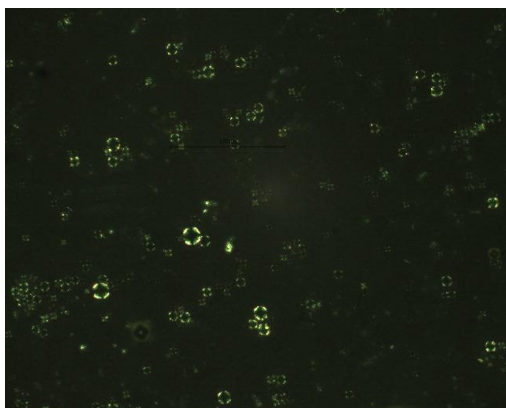
This cream is an O/W/O emulsion, providing easy spreading, soft final touch and long lasting moisturization.

Multiple emulsions are used to encapsulate and to protect active ingredients. They can be carried and released in a controlled manner. Multiple emulsions also reinforce moisturizing and nourishing action of the product. O/W/O emulsions are challenging to formulate and to stabilise.

The internal oil phase is emulsified by **MONTANOV™ 202** into an aqueous phase thickened and stabilized by **SIMULGEL™ NS** to make a thick O/W emulsion. This O/W emulsion is emulsified by **EASYNOV™** into emollients to form the O/W/O emulsion. This technology keeps the liquid crystals promoted by **MONTANOV™ 202**.

3% of **AQUAXYL™** offers intense hydration and reduces water loss.

The skin is perfectly moisturised, comfortable, plump and radiant.


**GS122901 - 1903**
**Formula**

A	Aqua/Water Glycerin Propylene Glycol	Qsp 100% 2.00% 12.00%
B	<b>MONTANOV™ 202</b> <b>LANOL 1688</b> Cetearyl Alcohol Prunus Amygdalus Dulcis (Sweet Almond) Oil Tocopheryl Acetate	1.00% 3.00% 2.00% 3.00% 0.20%
C	<b>SIMULGEL™ NS</b>	2.50%
D	<b>AQUAXYL™</b> Phenoxyethanol and Ethylhexylglycerin β-Glucan	3.00% 0.70% 2.00%
E	<b>EASYNOV™</b> <b>LANOL 99</b> Hydrogenated Polyisobutene	2.40% 1.00% 2.00%

**Procedure**
**Lab scale - Silverson Rotor-stator - 300g**

Mix phase A and heat it up to 85°C. Heat phase B up to 85°C. Add phase C to phase B, mix well, add phase A into phase (B+C), homogenize 4 minutes at 4000 rpm. Cool down without water bath during 10 min under anchor stirring at 100 rpm and add phase D under anchor stirring at 150 rpm during 10 min. Mix phase E, add phase E into the O/W emulsion (A+B+C+D) in one go, mix it under anchor stirring at 75 rpm during 1 min and then at 300 rpm during at least 10 min.

**Characteristics**

Appearance	White Cream
pH	
Viscosity 1M at RT	61800 mPa.s Brookfield S4S6
Viscosity 1M at 45°C	17300 mPa.s Brookfield S4S6
Viscosity recovery at RT (after 1M at 45°C)	80100 mPa.s Brookfield S4S6
Stability*	3M Stable at RT/ 45°C/ -18°C Stable after 1M of freeze/thaw cycles -5/+40°C

## Raw materials from SEPPIC

**MONTANOV™ 202**
**Arachidyl Alcohol and Behenyl Alcohol and Arachidyl Glucoside**

Glucolipid emulsifier derived from vegetable origin. Promoter of liquid crystals, it plays a role in maintaining skin moisturization over time. Thanks to liquid crystals which contain water, MONTANOV™ 202 helps to keep skin moisturized. Ecocert and Natrue approved.

**LANOL 1688**
**Cetearyl Ethylhexanoate**

Emollient agent which is easy-to-emulsify, LANOL 1688 gives a soft and light touch to the formula, and guarantees an easy spreading.

**SIMULGEL™ NS**
**Hydroxyethylacrylate/Sodium AcryloyldimethylTaurateCopolymer and Squalane and Polysorbate 60**

Thickening and emulsifying agent, Simulgel™NS is very easy to use in liquid form (neither pre-dispersion nor neutralization). It provides a sensation of freshness followed by a melting effect on the skin (velvety softness feeling). Simulgel™NS perfectly stabilizes emulsions made at high temperatures.

**AQUAXYL™**
**Xylitylglucoside and Anhydroxylitol and Xylitol**

AQUAXYL™ moisturizes and restructures the skin by harmonizing the hydric flow of the skin. Water reserves are instantly boosted, water circulation is improved in all skin layers and water loss is reduced (*in vitro* and *in vivo* tests prove this efficacy). It's mechanism of action has been validated by cosmetogenomics. Cosmos and Natrue approved.

**EASYNOV™**
**Octyldodecanol and Octyldodecyl Xyloside and PEG-30 Dipolyhydroxystearate**

EASYNOV™ is a liquid lipophilic emulsifier. It allows you to develop Water-in-Oil emulsions without wax and thus gives soft and silky texture without sticky or tacky effect. Thanks to its liquid form, the emulsions can be prepared by a cold process

**LANOL 99**
**Isononyl Isononanoate**

Emollient agent. Polar ester. Soft and light touch, non greasy finish and short play-time.

### Other raw materials...

- Schülke & Mayr  
Phenoxyethanol and Ethylhexylglycerin: **EUXYL PE 9010**
- Other suppliers
- Cetearyl Alcohol : **KALCOL 8670 (SASOL)**
- Prunus Amygdalus Dulcis (Sweet Almond) Oil: **LIPO ALM (LIPO)**
- Tocopheryl Acetate: **DL ALPHA TOCOPHEROL ACETATE (DSM)**
- β-Glucan: **SC-GLUCAN (BIOLAND)**
- Hydrogenated Polyisobutene: **PANALANE L-14E (LIPO)**