

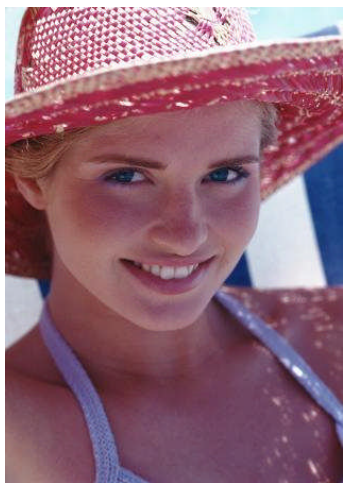
# RICH'N SMOOTH SELF-TANNING CREAM-GEL

Raw Materials from SEPPIC

Cream  
Gel



- White cream-gel
- Compatibility of Sepiplus™ S with DHA.
- Association of Sepiplus™ S with Simulgel™ FL for a stable formula, comfortable over time.
- Glycolic acid allows a slight peeling for an uniform self-tanning.



EU07105 - 1011

## Formula

A	SEPIPLUS™ S SIMULGEL™ FL C12-15 Alkyl Benzoate Dimethicone	2.00% 1.00% 10.00% 5.00%
B	Aqua/Water	60.00%
C	Propylene Glycol Glycerine Phenoxyethanol & Ethylhexylglycerin Tocopherol Parfum/Fragrance	2.00% 3.00% 1.00% 0.05% 0.20%
D	DHA Aqua / Water Glycolic Acid 67%	3.00% Up to 100% 0.50%
E	Sodium Hydroxide	Up to pH 4

## Procedure

### Lab trial – Rayneri - 300g

Weigh and homogenize part A.  
Add B under stirring.  
As soon as A+B is homogeneous, add successively ingredients of part C.  
Mix ingredients of D. Add D to A+B+C.  
Adjust pH to 4.

## Characteristics

· Aspect	White fluid
· pH	3.9
· Viscosity 1M at RT	38,000 cps BROOKFIELD LV M4 sp.6
· Viscosity 1M at 45°C	41,000 cps BROOKFIELD LV M4 sp.6
· Stability	>1M at RT and 45°C

### SEPIPLUS™ S

*Hydroxyethyl Acrylate/Sodium Acryloyldimethyl Taurate Copolymer & Polyisobutene & PEG-7 Trimethylolpropane Cononut Ether*

Liquid and thickening polymer, pre-neutralized and easy-to-use. Very good resistance to electrolytes in a wide range of pH (3-11) thanks to associative behaviour.

Good compatibility with DHA and pigments.  
Sensory profile: feeling of long lasting comfort.

### SIMULGEL™ FL

*Hydroxyethyl Acrylate / Sodium Acryloyldimethyl Taurate Copolymer & Isohexadecane & Polysorbate 60*

Liquid, easy and ready to use polymer. Stabilize all types of oily phases in a range of pH from 3 to 11.

Good compatibility with DHA.  
Stabilizing capacity for fluid formulas.

## Others raw materials...

- Phenoxyethanol & Ethylhexylglycerin : **EUXYL PE9010 (SCHULKE & MAYR)**
- C12-15 Alkyl Benzoate : **DUB (STEARINERIE DUBOIS)**
- Parfum : **Fruit d'été (TECHNICO FLOR)**