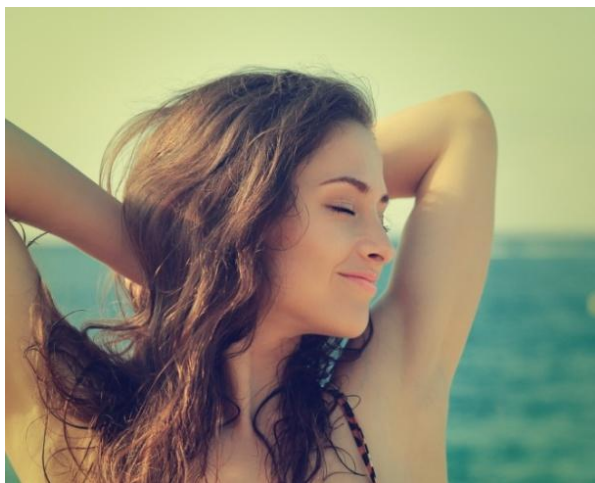




O/W
Emulsion



- Ivory liquid
- Packaging: roll-on
- Antiperspirant roll-on with a dry touch
- Controls odors without a wet effect
- SIMULGREEN™18-2 emulsifies the formula leaving a nude touch and sensation and very quick drying
- The marine powder, PHYCOCORAIL, absorbs odors and intensifies the dry skin effect
- SOLAGUM™ TARA stabilizes the antiperspirant active which is rich in aluminum salts



EU07311 - 1409

Formula

A	Aqua/Water SIMULGREEN™18-2	Qsp 100% 3.00%
B	LANOL™ 2681 SOLAGUM™ TARA PHYCOCORAIL	3.00% 0.50% 1.00%
C	Aluminium Chlorohydrate	40.00%
D	Parfum/Fragrance Phenoxyethanol and Ethylhexylglycerin	0.30% 1.00%

Procedure

BECOMIX (rotor stator) – 6kg

Heat water of phase A to 80°C while stirring. When water is hot, add SIMULGREEN™ 18-2, homogenize. Weigh LANOL™ 2681 in a beaker and heat with water bath to 80°C. Then, disperse the other ingredients of phase B. Introduce phase B to phase A and emulsify for 5 min. Add slowly phase C (4min). Homogenize for 3 min. Cool the emulsion to 30°C. Add ingredients of phase D and homogenize.

Characteristics

Appearance	Ivory Liquid
pH	3.9
Viscosity 1M at RT	7680 mPa.s Brookfield S3S6
Viscosity 1M at 45° C	9320 mPa.s Brookfield S3S6
Viscosity recovery at RT (after 1M at 45° C)	22600 mPa.s Brookfield S4S6
Stability*	Stable 1M at RT, 45° C, 4° C, -18° C and Freeze/Thaw cycles

Raw materials from SEPPIC

LANOL™ 2681

Coco-Caprylate/ Caprate

Emollient agent from vegetable origin. Ecocert approved.

SIMULGREEN™ 18-2

Hydroxystearyl Alcohol and Hydroxystearyl Glucoside

Emulsifier from vegetable origin with a structure designed to respect the environment and provides versatile emulsifying properties: allows formulation over a broad pH range (3-10), stabilizes all nature of oils, efficient from 2% especially with vegetable oils and provides good resistance to electrolytes/actives. Its sensory profile is exceptional: no soapy effect regardless of the oily phase and an « invisible » presence with a nude skin sensation during application and a lasting softness. It provides 8 hours moisturizing long lasting effect.

SIMULGREEN 18-2 wins 2013 China Personal Care&Cosmetics Innovation Awards. Ecocert and Natrue approved.

SOLAGUM™ TARA

Caesalpinia Spinosa Gum

A powerful thickening natural gum from Caesalpinia spinosa endosperm seeds. Synergistic efficiency with synthetic and natural polymers. Ecocert, Cosmos and Natrue approved.

PHYCOCORAIL

Algae Extract/Mannitol/Diatomaceous Earth/Zinc Sulfate

Powder form active which plays a sensorial role and acts as a free radical scavenger and photoprotector

Other raw materials...

- Aluminium Chlorohydrate : **Chlorydrol 50 (SUMMIT & REHEIS)**
- Parfum/Fragrance : **Parfum Aloe Bamboo Hydro (EXPRESSIONS PARFUMES)**
- Phenoxyethanol and Ethylhexylglycerin : **Euxyl PE9010 (SCHULKE & MAYR)**